

Comparison of HANS[®] and Hutchens Head and Neck Support Devices

HANS[®] Device

HANS[®] Performance Products, Atlanta, Georgia
www.hansdevice.com

Developed by Dr. Bob Hubbard and Jim Downing, the HANS[®] device is a carbon fiber collar worn around the neck, attached to the driver's helmet, and anchored by the shoulder belts. The system prevents whipping motions of the head by transferring these loads to the torso.

Approximate Unit Price: \$865



Hutchens Device

Safety Solutions, Inc., Concord, North Carolina
www.safetysolutions.com

Originally developed in association with Auotliv, Inc., the Hutchens device is a strap system attached to the driver's helmet and that wraps around the driver, anchored by hooking into the driver's lap belt, and transferring loads to the driver's groin region.

Approximate Unit Price: \$325

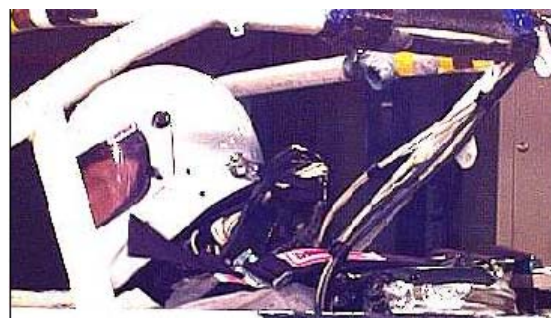


PERFORMANCE COMPARISON – Head Excursion

Sled Test Evaluation of Racecar Head/Neck Restraints, Melvin et al, 2002 – 35 MPH Impact



Hutchens
900 lbs neck load



HANS[®]
195 lbs neck load

PEER GROUP ACCLAIM

HANS[®] success has not come overnight. Downing and Hubbard have spent more than 20 years on the development of their HANS[®] technology as a commitment to help keep high-performance motorized sports participants from injury and save lives. Their success and commitment has been recognized by many professional and sporting organizations worldwide.